



**WATERFRONT**  
**CEBU CITY**  
**HOTEL & CASINO**

**QATAR**   
AIRWAYS القطرية



## Dear Valued Qatar Airways Crew,

Greetings from Waterfront Cebu City Hotel & Casino!

As the city's premier destination for business, leisure and relaxation, it is our commitment to provide each of our guests a safe and worry-free stay in the hotel. With this, in order to safeguard your overall health and well-being during your stay, we encourage you to strictly observe the following hotel safety measures:

1. Standard **check-in time** is at 3 p.m. and **check-out time** is at 12nn.
2. To minimize physical contact, we encourage **cashless transaction** via our online payment options.
3. Only a maximum of **two (2) persons** will be allowed to occupy per room.
4. **No visitors are allowed to visit inside the room.** Roaming around the hotel premises is also prohibited.
5. Social distancing of at least **two (2) meters** away from each other is highly encouraged.
6. **Wearing of face masks** in public area is a must.
7. Maximum capacity of elevator is up to **four (4) persons** only.
8. Frequent handwashing is encouraged. **Hand sanitizers and alcohol dispensers** are available all around the hotel.
9. For your meal requirements, **room service is available 24 hours.** Please dial local "2".
10. There shall be **no sharing of food or any personal or non-personal belongings.**
11. **All trash, food and non-food, shall be separated.** Trash bin found in the bedroom is intended for non-biodegradable and biodegradable wastes. Bathroom trash bin with underlying plastic is intended for bathroom wastes and used PPE's such as face mask, gloves, etc.
12. This is a **non-smoking hotel.** We have a designated smoking area at the Convention block.
13. And if you're **feeling sick or unwell**, please call the Duty Manager by dialing "0" or through extension number 8006.

Thank you for your cooperation and understanding.

**The Management**

[CLICK HERE TO FILL OUT THE HEALTH DECLARATION FORM](#)

## LIST OF HOSPITALS

### CEBU DOCTORS UNIVERSITY HOSPITAL

Osmeña Blvd., Cebu City  
Phone No. +63 (32) 255-5555  
+63 (32) 253-7511  
Fax No. +63 (32) 253-6021  
[www.cebudoctorshospital.com](http://www.cebudoctorshospital.com)

### CEBU CITY MEDICAL CENTER – CEBU CITY

N. Bacalso Avenue, Cebu City  
Phone No: +63 (32) 255-7141 to 47 loc. 105

### CHONG HUA HOSPITAL MANDAUE & CANCER CENTER

FF Cruz, Mandaue City, 6014 Cebu  
Phone: +63 (32) 233 8000  
[www.chonghua.com.ph](http://www.chonghua.com.ph)

### CHONG HUA HOSPITAL

Don Mariano Cui St.,  
Fuente Osmeña, Cebu City  
Phone No: +63 (32) 255-8000  
+63 (32) 254-1461  
Fax No: +63 (32) 253-5639  
[info@chonghua.com.ph](mailto:info@chonghua.com.ph)  
[www.chonghua.com.ph](http://www.chonghua.com.ph)

### CEBU VELEZ GENERAL HOSPITAL

F. Ramos St, Cebu City, Cebu  
Phone: +63 (32) 253 1871

### PERPETUAL SUCCOUR HOSPITAL

Gorordo Avenue, Lahug, Cebu City  
Phone No: +63 (32) 233-8620  
Mobile No: +63 (917) 650-4065  
[pshcares@pshcebu.com](mailto:pshcares@pshcebu.com)  
[www.pshcebu.com](http://www.pshcebu.com)

### SACRED HEART HOSPITAL

Villa Aznar, Urgello Street,  
Cebu City, 6000 Cebu  
Phone No: +63 (32) 254-9884

## LIST OF GOVERNMENT INSTITUTIONS

### DEPARTMENT OF TOURISM REGIONAL OFFICE

L.D.M Building,  
G/F, Legaspi St., Cebu City  
Phone No.: +63 (32) 254-2811

### DEPARTMENT OF HEALTH

Osmeña Blvd., Cebu City  
Phone No.: +63 (32) 418-7123

### POLICE REGIONAL OFFICE

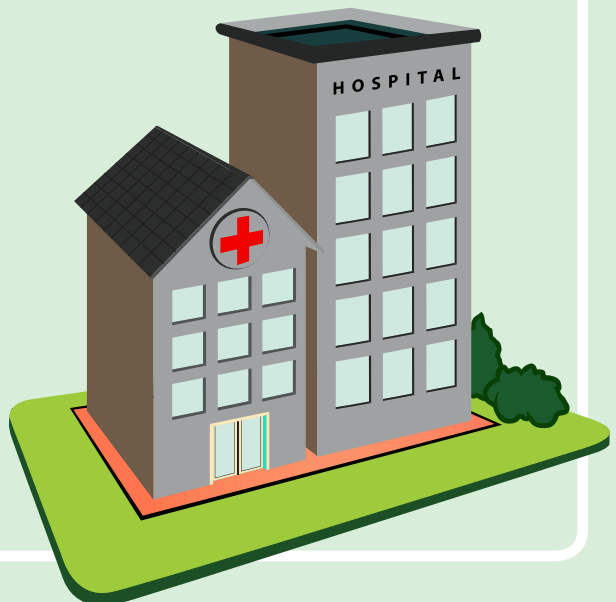
Osmeña Blvd., Cebu City  
Phone No.: +63 (32) 253-7674

### BUREAU OF FIRE PROTECTION - REGIONAL OFFICE

Natalio B. Bacalso Ave., Cebu City  
Phone No.: +63 (32) 254-8385

### LAHUG BARANGAY HALL

168 Gorordo Ave., Cebu City  
Phone No.: +63 (32) 231-5262



# GUIDELINES IN ENTERING THE HOTEL

## No Mask, No Entry.

All guests must wear face masks when in public area.



All hotel guests entering the hotel will be scanned automatically for a body temperature check, hand sanitation and will pass through a foot bath that is soaked in disinfecting solution.



Upon check-in, all guests must fill out the registration and health declaration form.



# SAFETY AND SECURITY RESPONSE GUIDELINES ON PANDEMIC INFLUENZA

In accordance to the recent public health advisory issued by the Department of Health (DOH), Waterfront Cebu City Hotel & Casino, has set the following guidelines to ensure the safety and wellness of hotel guests and partners:

In the case of a confirmed Pandemic Influenza, each department shall refer to the following guidelines

1

Influenza is a contagious respiratory illness caused by flu viruses. It can cause mild to severe illness, and at times can lead to death which includes the following symptoms:



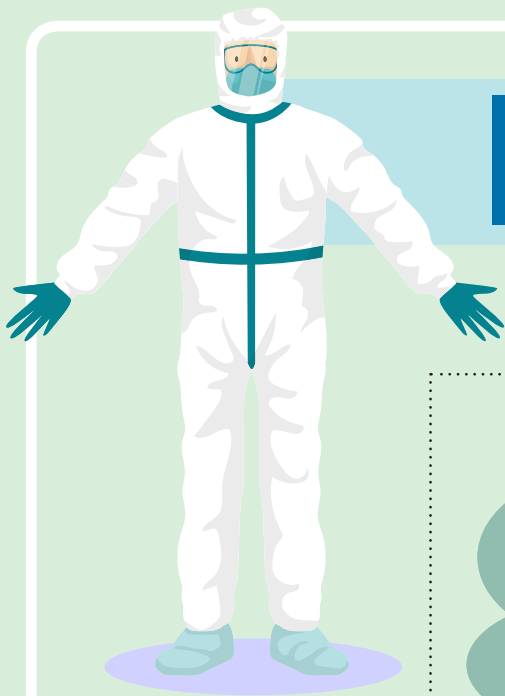
2

All guests and employees entering the hotel will be subjected to thermal scanning. Upon scanning, guests and employees who have a body temperature of 38 degrees and above shall be brought to the Clinic for further assessment.



3

Immediately isolate the area or room where the patient is located.



4

Responding Security and Medical personnel (Hotel Nurse) should wear the necessary PPE's prior to exposure to the area or location of the patient.

5

Inform the Crisis Management Team Chairman (GM) and ERT Chairman (SSM) immediately.



6

Upon Nurse's assessment, case shall be escalated to the Hotel Doctor for validation of pandemic influenza symptoms. After the Hotel Doctor's validation, case shall then be reported to the Department of Health (DOH) for confirmation.

7

Upon confirmation of the DOH, Security personnel shall assist in the transfer of the patient to the appropriate facility or hospital. Required transportation shall only pass through the back of the house clear of any guest or hotel employee.





Once the transport is done, all areas that has been passed through by the patient shall be temporarily isolated, cleansed and sanitized by Housekeeping using the appropriate chemicals and cleaning agents. The route shall be isolated until the sanitizer has fully taken effect and killed any contact or airborne virus.

9

Secure a list of all employees who were present at the time the transportation of the patient out of the hotel or those who have made contact, entered or interacted near or with the patient or location.

10



Ensure to log all details and actions in the emergency logbook located at the control room.

11

Ensure to debrief all security personnel that, in accordance to Data Privacy Act, no information about the incident should be out to any public or private entity. Direct all inquiries to the Marketing Communication staff.



## Christine G. Luague

Sales Director

WATERFRONT CEBU CITY HOTEL & CASINO  
Salinas Drive, Lahug, Cebu City, 6000 Philippines  
Mobile No: +63 998 594 8638  
Tel: (6332) 232 6888 Loc. 8035  
Fax: (6332) 232 4545  
Zoom ID: 340 232 5706  
Email: [c.luague@waterfronthotels.net](mailto:c.luague@waterfronthotels.net)  
Website: [www.waterfronthotels.com.ph](http://www.waterfronthotels.com.ph)  
Facebook: <https://www.facebook.com/WaterfrontCebuCity/>  
Instagram: <https://www.instagram.com/waterfrontcebu/>



[Click here to view rooms and suites](#)

## Fila Sofia Ubalde-D'Lonsod

Conventions and Events Director

WATERFRONT CEBU CITY HOTEL & CASINO  
Salinas Drive, Lahug, Cebu City, 6000 Philippines  
Mobile No: +63 998 594 8599  
Tel: (6332) 232 6888 Loc. 8044  
Fax: (6332) 232 4545 Loc. 8008  
Zoom ID: 591 877 1746  
Email: [s.dlonsod@waterfronthotels.net](mailto:s.dlonsod@waterfronthotels.net)  
Website: [www.waterfronthotels.com.ph](http://www.waterfronthotels.com.ph)  
Facebook: <https://www.facebook.com/WaterfrontCebuCity/>  
Instagram: <https://www.instagram.com/waterfrontcebu/>



[Click here to view event packages](#)

[CLICK HERE TO VIEW ROOM SERVICE MENU](#)

[CLICK HERE TO VIEW HOTEL COMPENDIUM](#)

### WATERFRONT CARE SANITATION MENU

Disinfectant (70%) Alcohol Solution	42.00
Sanitizing Gel	50.00
Antibacterial Wet Wipes	42.00
Antibacterial Bar Soap	35.00
Antibacterial Mouth Wash	90.00
Disposable Masks (5pcs/pack)	125.00
Nitrile Gloves (2 pairs)	30.00
Zonrox Bleach (100ml)	15.00
Lysol Disinfectant Spray (170g)	330.00